

Chinese Educators Learn at BYU-Hawaii

by Richard Timms

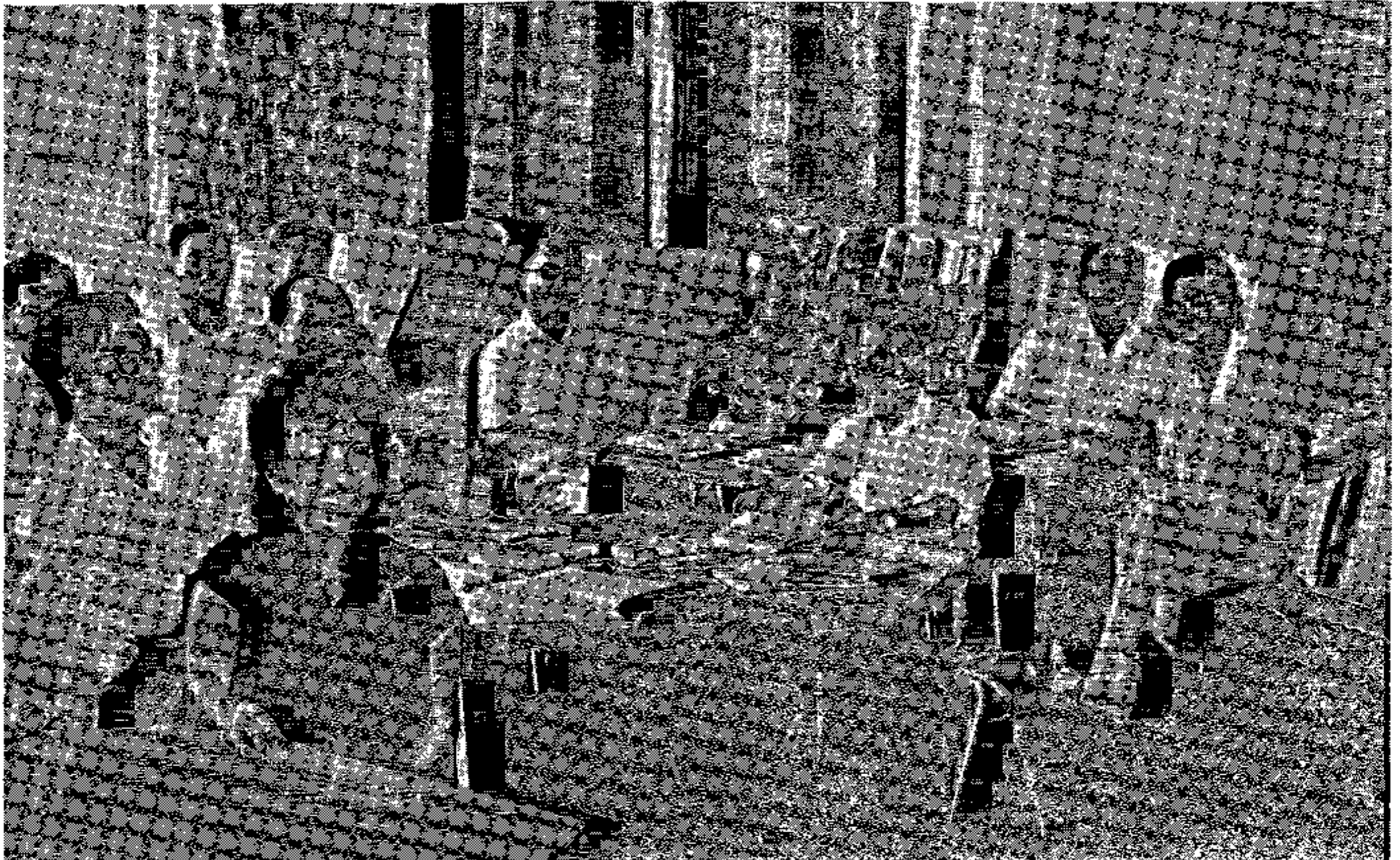
Twenty-eight educators from Keelung, Taiwan visited Brigham Young University—Hawaii Campus for five days, August 10-15, to attend an orientation seminar held on campus. The group of elementary and junior high school principals and teachers was on the first leg of a 15 day trip to the United States, sponsored by the Keelung City Government, to learn more about the American educational system, especially in the area of teaching English as a second language.

While on campus, the educators attended lectures on the American educational system and experienced ESL from a student's point of view in classes taught by BYU—HC instructors. They also received a general orientation to the field of TESL as well as to the University's English Language Institute program by E.L.I. director Lynn Henrichsen. Then, they enjoyed a "hands on" experience with TESL

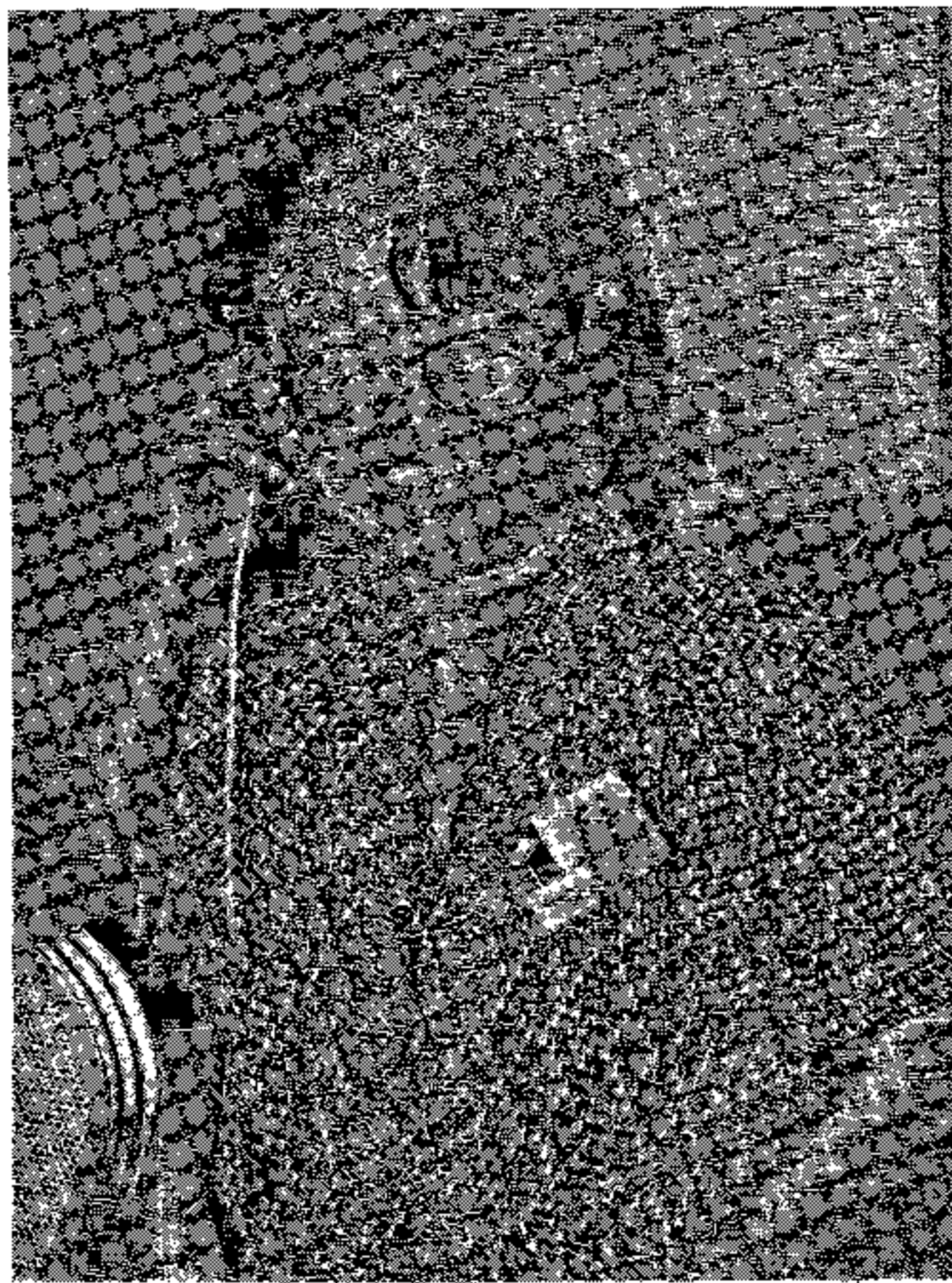
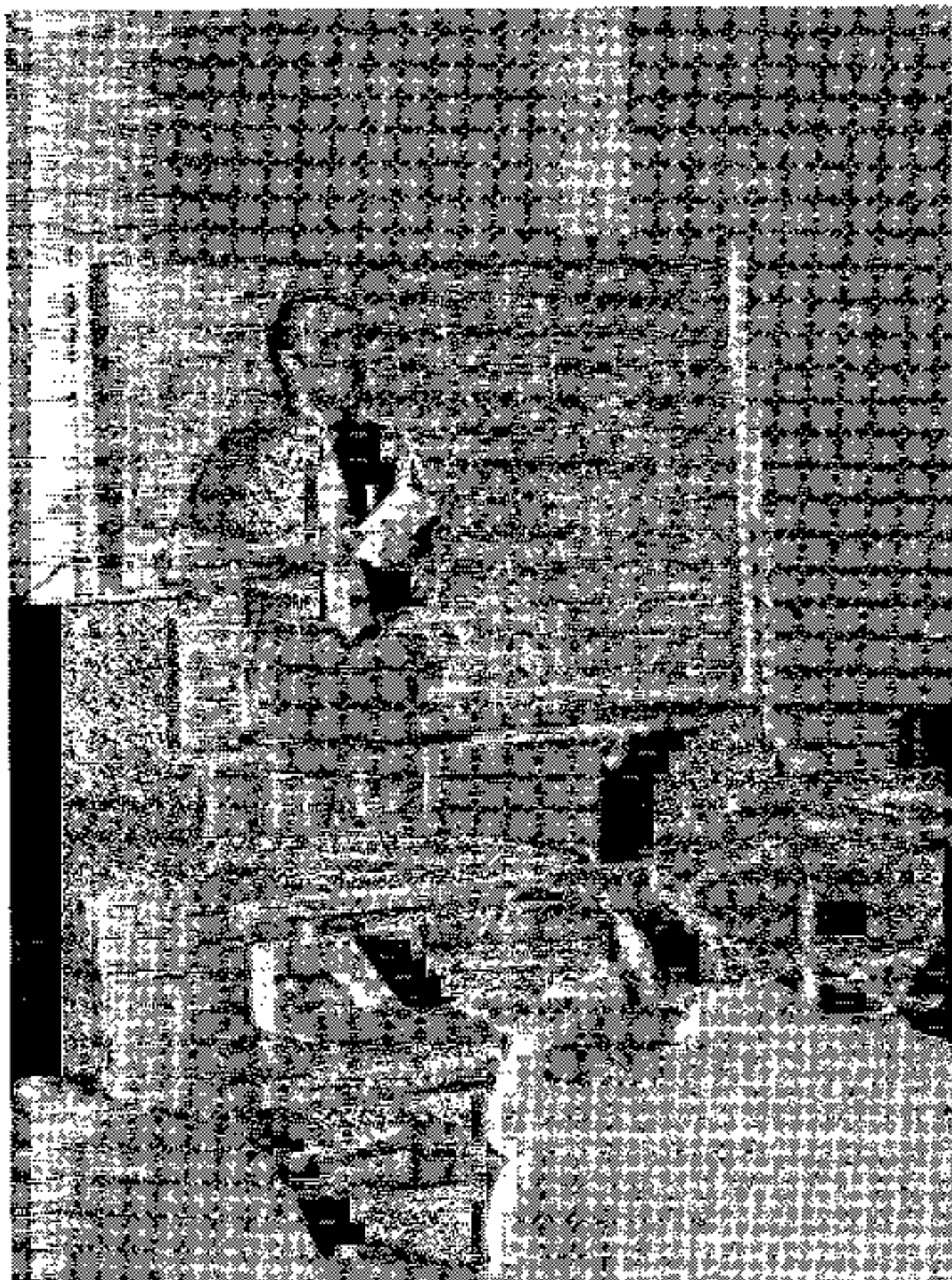
materials in the Campus English Skills Center.

In spite of a busy schedule of meetings, the educators also enjoyed a wide variety of other activities. They experienced student life first hand, living in the student dormitories as well as eating and talking with students in the cafeteria and elsewhere on campus. Not only did the group learn while in Laie, they also taught, explaining about life and education in Taiwan. They also spent a day at the Polynesian Cultural Center, where they learned more about the cultures of the Pacific Islands, and toured other scenic areas of Oahu.

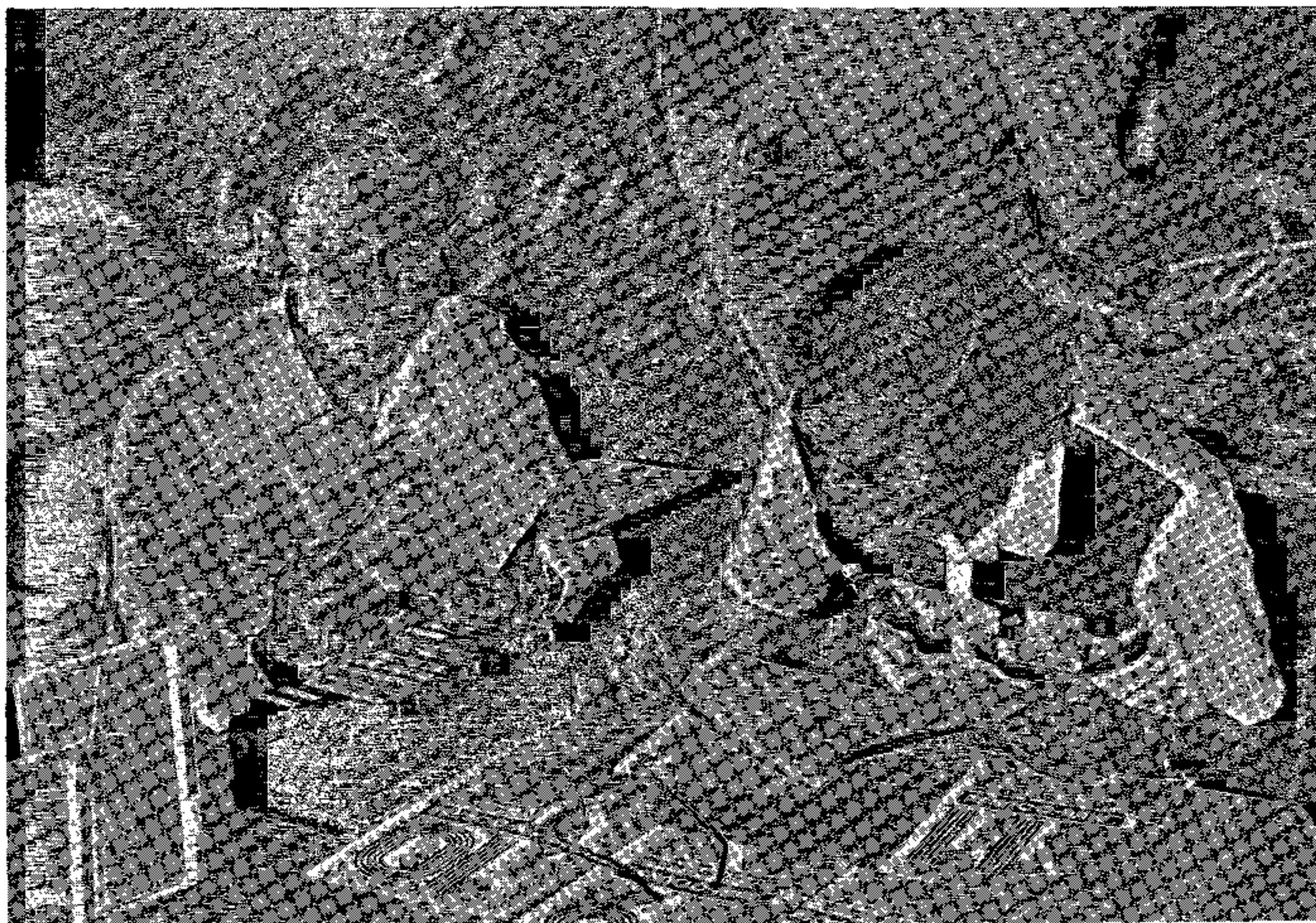
After their stay in Laie, the group went on to Los Angeles, Las Vegas, and San Francisco. There they learned more about the United States, before returning to Keelung with many memories of their experience in America.



Attentive principals and teachers visit BYU—HC English Skills Center.



Visitors enjoyed attending educational lectures and experiencing TESL materials first hand.



Educators examined individualized English learning programs with interest.



Richard Timms, a BYU-HC TESL student from Indiana, explains English teaching materials to a visiting Chinese educator (story on page 50).

TESL Reporter

Box 157

Brigham Young University

Laie, Hawaii 96762

Non-Profit Organization

U.S. Postage

PAID

LAIE, HAWAII

Permit Number One

address correction requested

Are you moving? The special mailing rate which helps keep expenses low enough that the *TESL Reporter* can be sent to you free of charge does not provide for forwarding if your address changes. Please notify the *TESL Reporter* of the change *before* you move if possible, so that you won't miss an issue.