

# JAPANESE GROUPS

Under the auspices of The Church College of Hawaii Asian Studies Institute, Kenneth Orton, President, two Japanese student tour groups were on the CCH campus during August 1971. They came as pilot exchange groups from Western Japan--Osaka, Kyoto, Nora, and Himeji and Tokyo.

The first to arrive were the JISU: Japan International Student Union Group, accompanied by student president, Yoshinori Kawabata. The 22 college students forming this group represented the 12,000 member Student Youth Association in Japan (ages 18-26). Preliminary exchange activities between The Church College of Hawaii, the JISU students and the SOJITSU tour group, which arrived a few days later, were held in Japan under the direction of President Orton earlier in the summer.

The academic program and staff arrangements were correlated by Mrs. Betty Crethar, instructor in the English Language Institute at CCH. The program included acculturation experiences on the college

campus. The JISU students, a highly motivated and stimulated group of young people, had varying degrees of English proficiency. As they were anxious to see and speak to as many Americans as possible, the group had a balanced program of morning classroom work with afternoon and evening extra-curricular activities.

The English Language Institute curriculum included individual and group conversation within the reading comprehension sessions, grammar periods using over-head projectors, and reinforcement drills using local newspapers, telephone books, campus "grammar walks", city maps, and Hawaii travel brochures. The Japanese instructors also gave help with translation, and interpretation on the local tours in Hawaii.

As reinforcement exercises in the area of correct preposition usage, daily "grammar walks" with the instructor were introduced. The students took these preposition walks, talking their way "around," "through," "over," "under," "against," and "in" or "on" the campus and classroom areas. It



# IN SUMMER SESSION

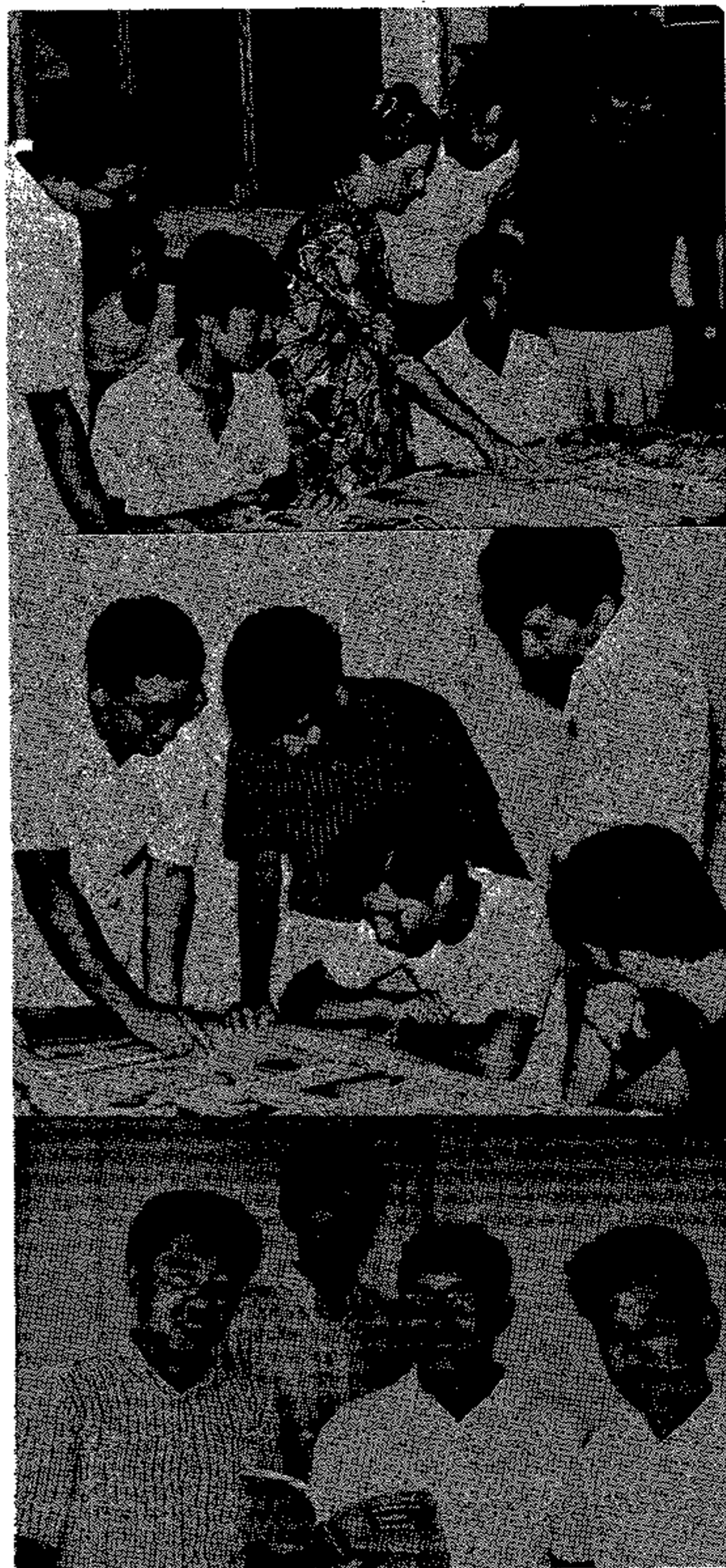
was a walking classroom situation in the warm Hawaii sunshine, fanned by cool ocean breezes.

By student request, an afternoon program was instituted which involved the students in addition to the English "conversation walks." Accompanying the students on these walks were a wide variety of English speaking people, including CCH faculty children, English speaking foreign students, and mainland Americans, as the Japanese students were eager to converse with as many different English speaking people as possible. The walks were taken into the hills and to nearby beach areas.

The SOJITSU Hawaii Seminary tour group of 46 Junior and Senior High students, with four of their teachers, arrived a few days after the JISU group. These students, associated with the Waseda Schools in Tokyo, had English proficiency much lower than the earlier group so a different curriculum, consisting of low-vocabulary and high-interest films, was instituted. Singing games, pattern drills, and vocabulary exercises utilizing local newspapers were also used. Newspaper-vocabulary competition games were popular. The Dolch Sight Words and Japanese "eye-catching" words i.e. Datsun, Baseball, Japan, etc., were written on the blackboard. Each student was given a stack of newspapers, a sheet of paper, scissors and glue and told to find these words, cut them out, and paste them on his sheet of paper. A time limit and a "class prize" were also part of the activity.

An orientation program on the English Language Institute at the Church College of Hawaii for the leaders was conducted by Alice C. Pack, director. Sample material and books used by the Institute were given to the teachers.

The SOJITSU Hawaii Seminar Tour students and teachers also visited Honolulu



Schools--the University of Hawaii, Punahou Academy and Iolani School for guest lectures.

Both the JISU and SOJITSU groups expressed a strong desire to be associated with similar programs in future years.