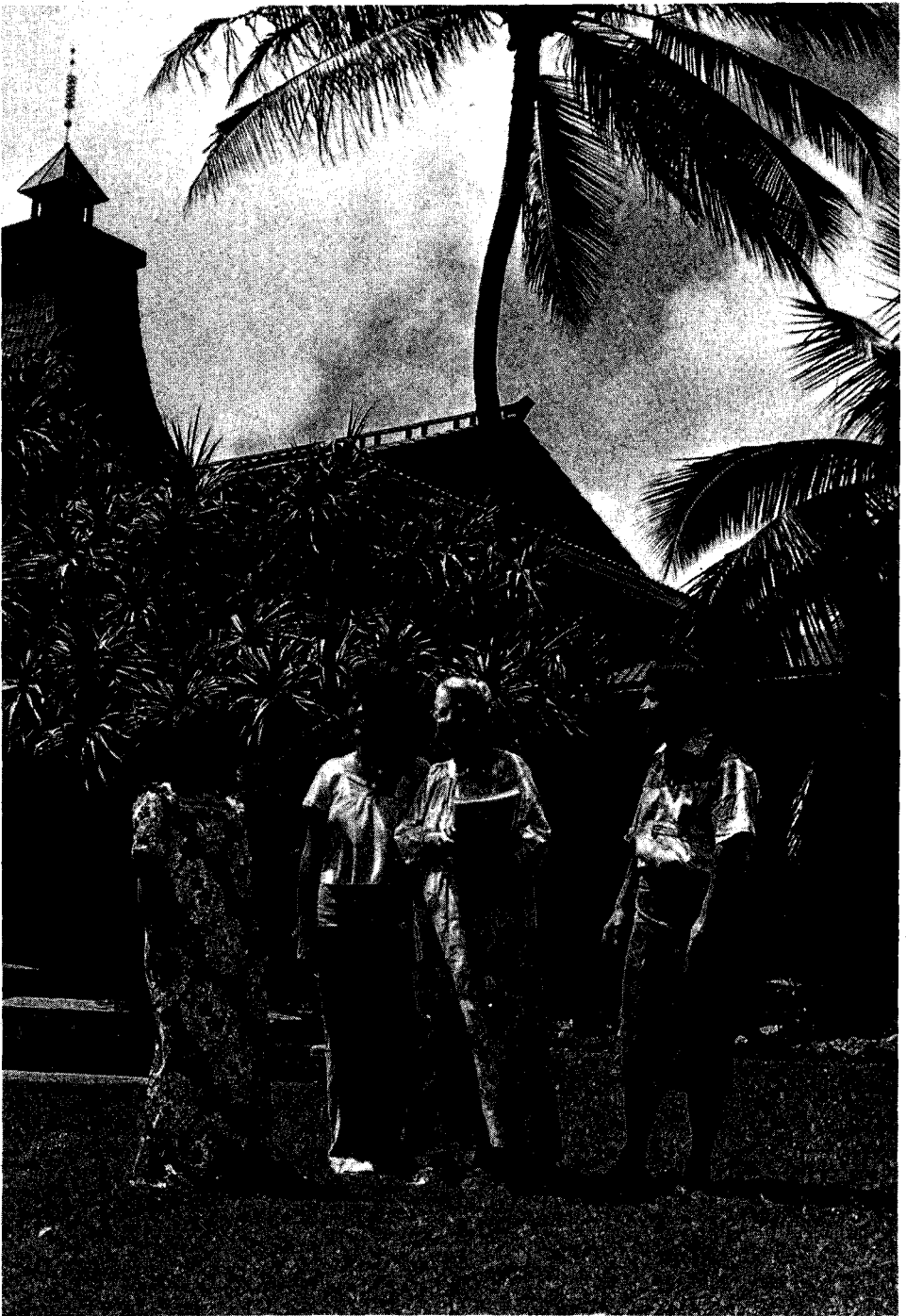


The *TESL Reporter*, with a circulation of three thousand is published by Brigham Young University–Hawaii Campus as a service to TESL scholars, teachers and students.

The BA-TESL Program at Brigham Young University–Hawaii Campus, like the *TESL Reporter*, is now twelve years old. The program was one of the very first of its kind in the nation, and it has continually been modified to better meet the needs of the TESL community.

TESL is a “natural” at BYU–HC because thirty-two different countries are represented here—the highest percentage of international students of any U.S. institution of higher learning. The largest group is from the Hawaiian Islands, followed by the South Pacific and the Far East. The remainder are from the United States mainland, Canada, Europe, Latin America, and Africa. Dr. Alice C. Pack, *TESL Reporter* editor for the past ten years, is shown talking with a representative group of TESL students.



AUTHOR, TITLE, AND SUBJECT

INDEX

TO THE *TESL REPORTER*

VOLUMES I–XII

1967 – 1979

TESL REPORTER

Box 157

Brigham Young University

Laie, Hawaii 96762

Non-Profit Organization

U.S. Postage

PAID

LAIE, HAWAII

Permit Number One

address correction requested
return postage guaranteed